

Review Board Steps

- ✓ Owner comes to City Hall for permit application
- ✓ Owner is given IHPB Package to Review, Complete and Return
- ✓ City Hall calls IHPB member to pick up
- ✓ IHPB member reviews package and does on-site inspection.
- ✓ IHPB returns package to City Hall with recommendations and/or authorization to continue with permit

Examples of Existing Historically Acceptable & Unacceptable Structures On Main St.

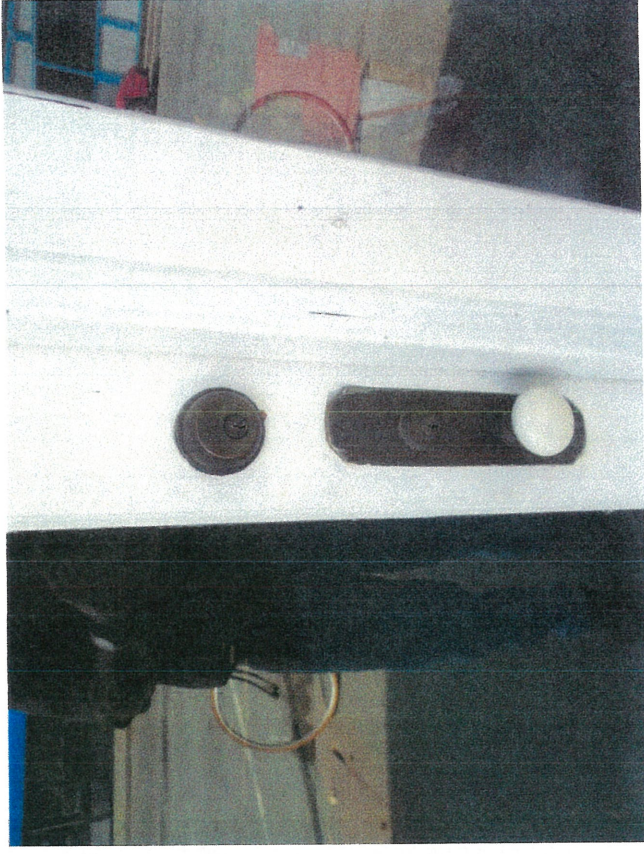
Acceptable doors, door hardware,
screen doors, redwood windowsills
above door windows and upper facades
Various unacceptable features

Acceptable Door Hardware

**Historic pull and knob with
keyhole above**

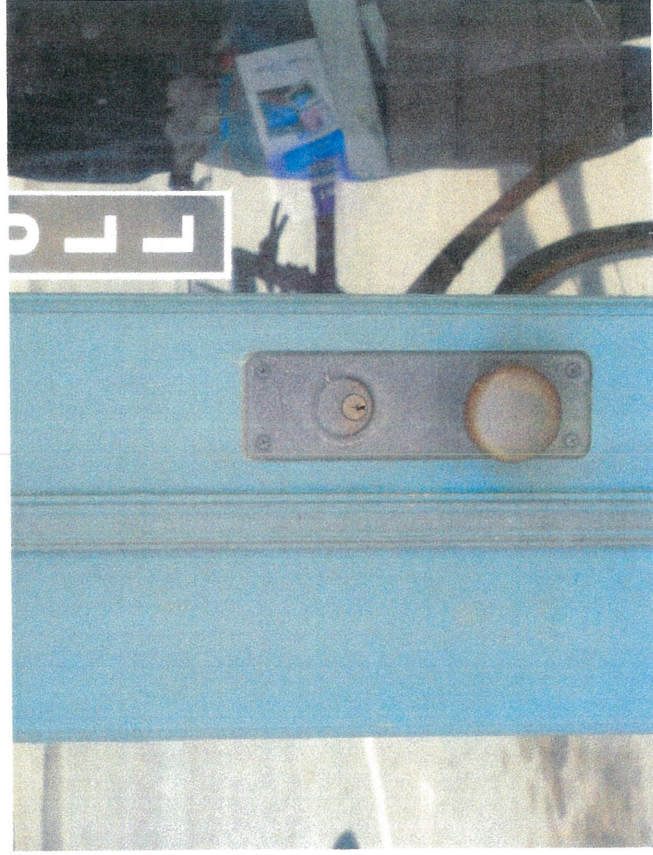


**Historic glass knob with lock
above**

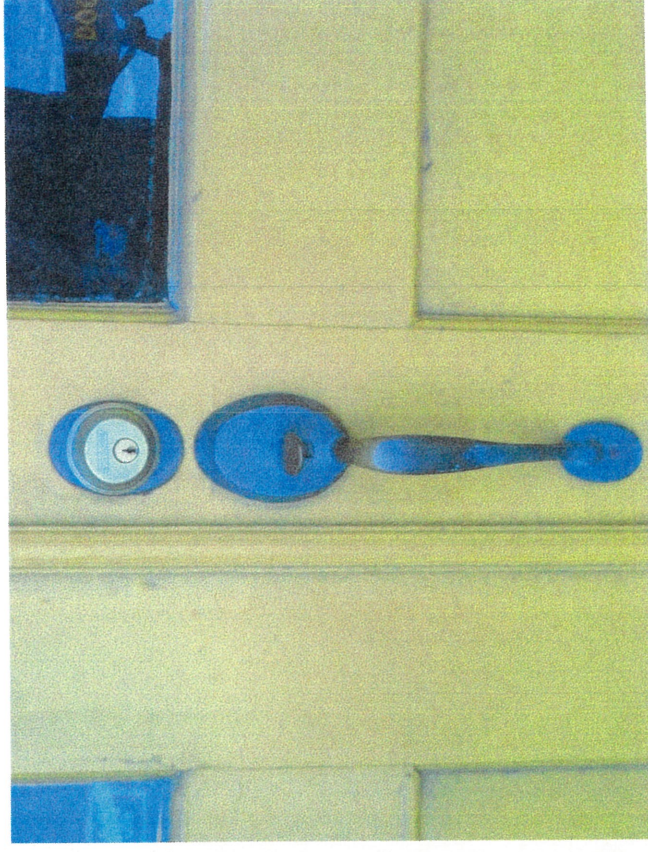


Acceptable Door Hardware

Two versions of historic locks:
In the original setting,



and with original oval lock shape
conserved, newer lock added



Acceptable Historic Door Structure

Single door, with window



Double doors



Acceptable Historic Door Structure

Double doors with raised panels

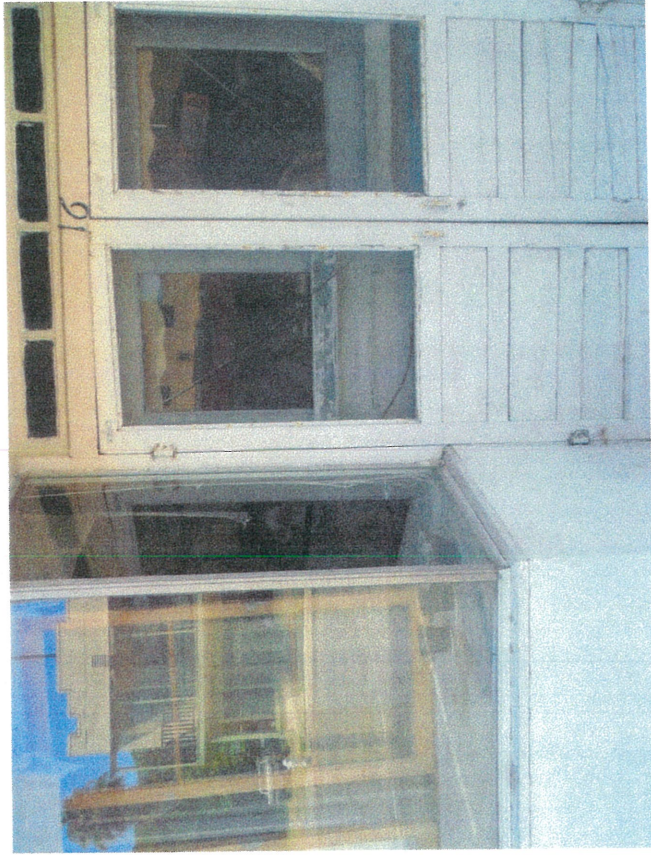


Double doors in entry archway

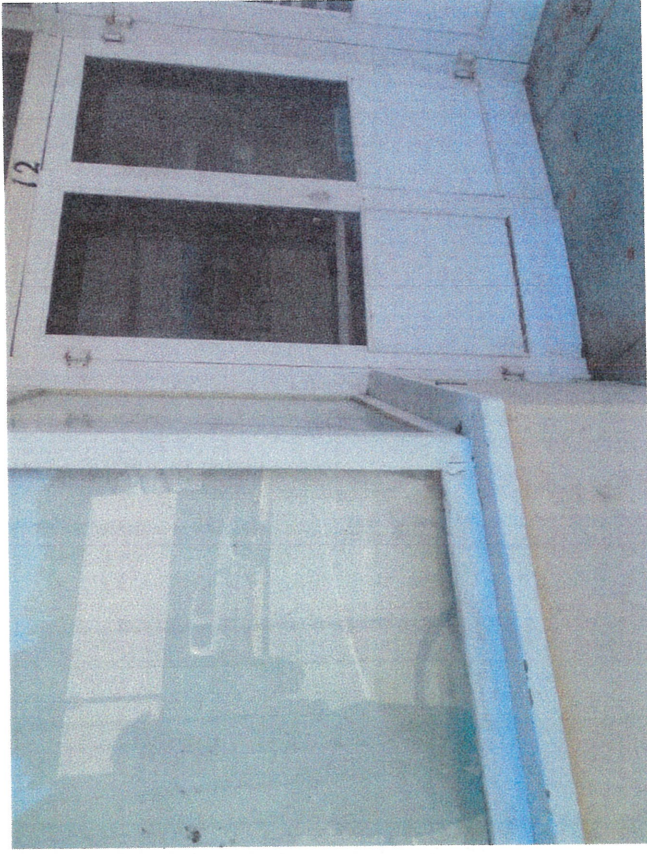


Acceptable Screen Doors

Double doors with double screen doors



Full pane double doors with double screen doors



Acceptable Screen Doors

Screen doors with self-closing hinges

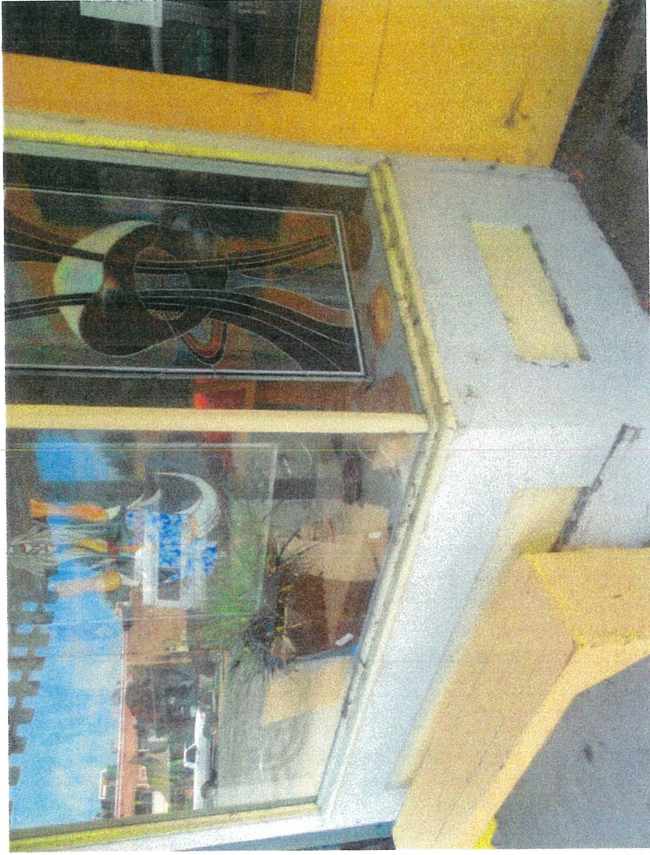


Screen Doors with safety inserts



Acceptable Historic Redwood Window Sills

**Exterior trim is redwood with
metal sills**



**Sill with apron, made of
redwood**



Acceptable Historic Redwood Window Sills

Redwood sill, trim and dividers



Redwood sill, trim and dividers



Acceptable upper facades

Bead-board with redwood trim

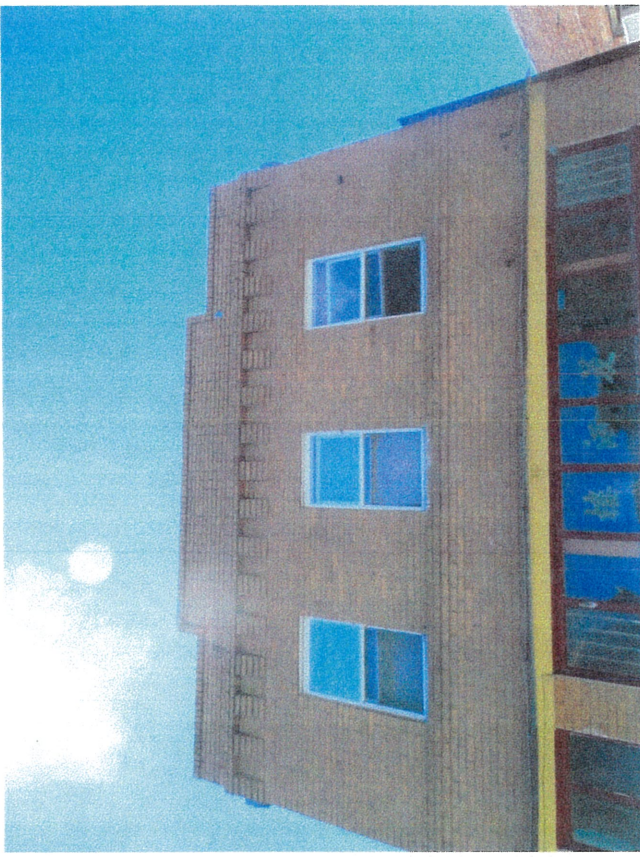


Shiplap with redwood trim at the top

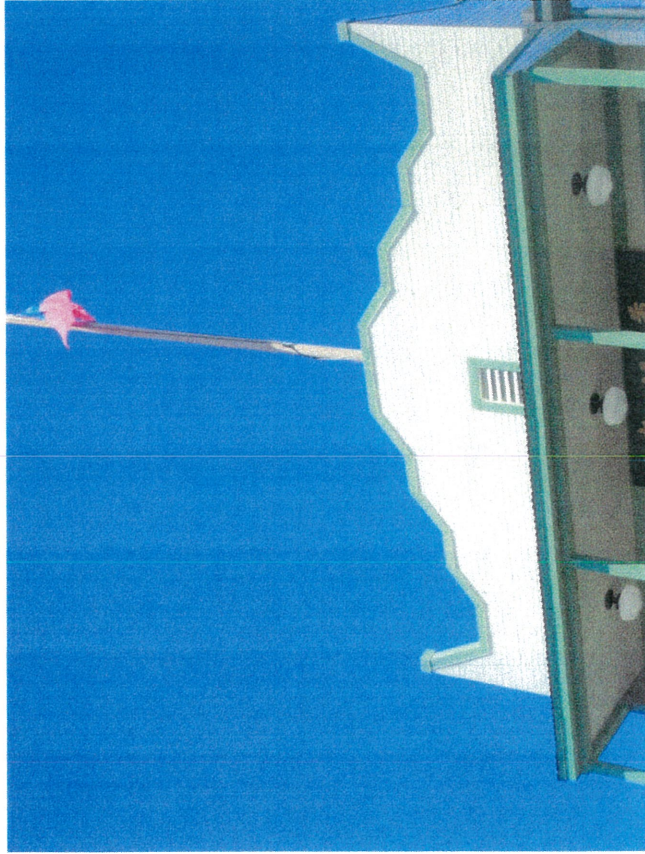


Acceptable Upper Facades

Brick façade with pattern, cap on top



Metal siding, redwood at the top



Unacceptable Features

Siding, window and door materials

T-111 and vinyl windows



Unacceptable Features

Vinyl windows and doors unacceptable



Vinyl windows, doors and balcony beams unacceptable.



Unacceptable Features

T-111 and Doug fir cannot be used for window frames.



T-111 and Doug fir cannot be used for window frames.



Unacceptable Features

T111 and commercial door



Vinyl windows and vinyl doors

